



**International
House**
Bangkok

BROCHURE PRICELIST 2025



A Member of the
International House World Organisation



We're celebrating 70 years of IH

Package	Hours	Study Time	Age	Minimum Level
GE15	15	AM*	16+	Elementary
GE25	25	AM & PM*	16+	Elementary
BE25	25	AM & PM*	16+	Pre Intermediate
IBE20	20	PM*	16+	Pre Intermediate
IBE25	25	AM & PM*	16+	Pre Intermediate
EX10	10	By Arrangement	16+	Pre Intermediate
EX25	25	AM & PM*	16+	Pre Intermediate
MIX25	25	AM & PM*	16+	Elementary
Custom Private		By Arrangement	5+	Beginner
		Subject: Max Students: Hours per day:		Any Subject by Arrangement by Arrangement

Note

*Am = 9:00 - 12:15, PM = 13:15 - 15:15

Maximum students in the class is 12
 15 minute break at 11:00
 Courses start every Monday.
 Lessons from Monday to Friday.
 Study for any number of weeks. Receive a cheaper rate for longer courses.

Every course includes: Classes, level test, certificates, materials/book, programme of social and cultural activities, and access to all school facilities.

Not Included: Entrance/transport fees for optional social activities, registration fees.

Public Holidays: Please find our holidays at www.ihbangkok.com/holidays/



2025

STUDY HOLIDAY COURSES

ADULTS COURSES 16+

Course	GE15	GE25	BE25	IBE25	IBE20	EX25	EX10	MIX25	
English Focus	General	General	Business	Business	Business	Exam	Exam	By Choice	
Total Hours (Daily)	3 Hrs.	5 Hrs.	5 Hrs.	5 Hrs.	4 Hrs.	5 Hrs.	2 Hrs.	By Choice	
9:00 - 12:15*	✓	✓	✓	✗	✗	✓	✗	✓	
13:15 - 15:15	✗	✓	✓	✓	✓	Private	Private	Private	
Group Hours (weekly)	15 Hrs.	25 Hrs.	25 Hrs.	10 Hrs.	10 Hrs.	15 Hrs.	✗	15 Hrs.	
Private Hours (weekly)	✗	✗	✗	15 Hrs.	10 Hrs.	<u>10 Hrs.</u>	<u>10 Hrs.</u>	<u>10 Hrs.</u>	
Maximum students	12	12	12	12	12	12	1	12	
Minimum Level	Elementary	Elementary	Pre-Int	Pre-Int	Pre-Int	Pre-Int	Pre-Int	Elementary	
Maximum Level**	Upper Int.**	Upper Int.	Upper Int.	Upper Int.	Upper Int.	Upper Int.	Upper Int.	Upper Int.	
Price Per Week	1 Week	฿7,000	฿11,500	฿11,500	฿25,150	฿18,400	฿20,500	฿13,500	Combine
	2 - 3 Weeks	฿6,300	฿10,500	฿10,500	฿23,700	฿17,200	฿19,300	฿13,000	GE 15
	4 - 6 Weeks	฿6,300	฿10,500	฿10,500	฿22,950	฿16,700	฿18,800	฿12,500	Private 1:1
	7 - 12 Weeks	฿6,000	฿10,000	฿10,000	฿22,750	฿16,500	฿18,500	฿12,500	Class
	13 - 24 Weeks	฿5,700	฿9,500	฿9,500	฿22,550	฿16,300	฿18,200	฿12,500	Below
	25 Weeks +	฿5,400	฿9,000	฿9,000	฿22,350	฿16,100	฿17,900	฿12,500	✓

ADULTS COURSES 16+

General English - Private Courses

Teacher to student ratio:	10 Hours	20 Hours	40 Hours
1:1	฿12,500	฿24,000	฿46,000
1:2	฿8,500	฿16,000	฿30,000
1:3	฿7,500	฿14,000	฿26,000
1:4	฿6,500	฿12,000	฿22,000

02 252 9996
+66 (0) 92 653 3688
INFO@IHBANGKOK.COM

Note
* 15 Minute break at 11.00

GE = General English
BE = Business English
EX = Exam Preparation

- EX: IELTS, TOEFL, TOEIC, KET, PET, FCE, BEC,
1. Courses start every Monday
2. Lessons from Monday to Friday
3. Study for any number of weeks

English for Special Purpose - Private Courses (IELTS, CAMBRIDGE, BUSINESS ENGLISH)

Teacher to student ratio:	10 Hours	20 Hours	40 Hours
1:1	฿13,500	฿26,000	฿50,000
1:2	฿9,500	฿18,000	฿34,000
1:3	฿8,500	฿16,000	฿30,000
1:4	฿7,500	฿14,000	฿26,000



To receive a discount, you must sign up for the specified amount of weeks at one time.

Every course includes: Classes, Level test, certificates, Social activities and access to all school facilities.

Not Included: 3000 THB Registration fee for airport pick up and accommodation support. ED visas are a further 2000 THB

2025

ENGLISH COURSES

Business English / TOEIC

Teacher to student ratio:	10 Hours	20 Hours	40 Hours
1:1	฿13,500	฿26,000	฿50,000
1:2	฿9,500	฿18,000	฿34,000
1:3	฿8,500	฿16,000	฿30,000
1:4	฿7,500	฿14,000	฿26,000

Business English: Specialized English Courses

- English for Emails
- English for Accounting
- English for Human Resources
- English for Marketing
- English for Aviation & Airlines
- English for Logistics

English: College Admissions Services

Teacher to student ratio:	10 Hours	20 Hours	40 Hours
1:1	฿17,000	฿34,000	฿60,000

IGCSE / IB Middle Years Program: All Subjects

	10 Hours	20 Hours	40 Hours
1:1	฿15,000	฿28,000	฿52,000

SAT: English, Mathematics and Writing / TOEFL

	10 Hours	20 Hours	40 Hours
1:1	฿15,000	฿28,000	฿52,000

BMAT: English, Science and Writing

	10 Hours	20 Hours	40 Hours
1:1	฿20,000	฿38,000	฿72,000

AS/A Levels / IB Diploma Program / GED

	10 Hours	20 Hours	40 Hours
1:1	฿18,000	฿34,000	฿64,000

AS/A Levels / IB Diploma Program / GED

	10 Hours	20 Hours	40 Hours
1:1	฿18,000	฿34,000	฿64,000

02 252 9996
+66 (0) 92 653 3688
INFO@IHBANGKOK.COM

Every course includes: Classes, Level test, certificates, Social activities and access to all school facilities.

Not Included: 3000 THB Registration fee for airport pick up and accommodation support.
 ED visas are a further 2000 THB



Business English

Empower Your Career with Fluent Business English! Looking to shine in the global marketplace? Business English is your secret weapon, and we're here to arm you to the teeth!

Why Our Business English Course is Essential for Professionals:

1. **Specialized Instructors:** Benefit from trainers who have a background in the corporate world, ensuring real-world relevance.
2. **Language Precision:** Learn to articulate ideas, draft emails, and make presentations with clarity and confidence.
3. **Cultural Nuances:** Beyond language, grasp the subtle etiquettes of global business interactions.

College Admissions

Introducing the Ultimate College Admissions Course!

Are you dreaming of entering a top-tier college but feeling overwhelmed by the intricate admissions process? Let our expertly designed course light your path!

1. **Expert Instructors:** Learn directly from former college admissions officers who've been on the other side of the process!
2. **Personalized Essay Coaching:** Craft compelling essays that captivate and resonate. Stand out from the crowd!
3. **Demystify the Process:** From application timelines to recommendation letters – get clear, step-by-step guidance.
4. **Language School Advantage:** As a leading language institution, we ensure your linguistic skills are top-notch, making your application shine even brighter!
5. **Mock Interviews:** Simulate the real experience with our mock interviews and gain confidence.

IGCSE & IB Preparation Courses

Elevate Your Learning with Our Premier Preparation Program!

Navigating the demanding curricula of GCSE & IB? Ensure you're steps ahead with our dedicated preparation courses tailored for success.

Why Our Prep Courses Stand Out:

1. **Distinguished Faculty:** Our educators are well-versed in GCSE & IB standards, ensuring you get the top-tier guidance you deserve.
2. **Language Mastery:** As a renowned language school, we emphasize linguistic prowess, enhancing your coursework and exam responses.
3. **Targeted Study Material:** Access exclusive resources, mock exams, and model answers crafted for results.
4. **Collaborative Learning:** Engage in group discussions, peer reviews, and team projects to foster deeper understanding.
5. **Critical Thinking Boost:** Dive deep into subject matter with analytical exercises designed for IB & GCSE brilliance.

SAT

Reach for the Stars with Our Proven SAT Prep Course!

Eyeing the world's best universities? The SAT is your ticket, and we're here to guide you every step of the way!

Why Our SAT Course is a Game-Changer:

1. **SAT Savvy Educators:** Learn from the best. Our team comprises experts with years of experience in SAT training.
2. **Language Precision:** With our language school's expertise, master the intricate nuances of the SAT's Evidence-Based Reading and Writing sections.
3. **Strategic Approach:** Benefit from test-taking strategies that boost confidence and optimize time management.
4. **Real Test Experience:** Simulate exam day with full-length practice tests, detailed score analysis, and feedback sessions.

BMAT

Elevate Your Medical School Dreams with Our Expert BMAT Prep!

Aiming for the UK's top medical schools? The BMAT is your key, and our course is the map to navigate it!

Why Our BMAT Course is Your Best Choice:

1. **BMAT Mastery:** Our seasoned educators boast years of experience, guaranteeing you first-class BMAT insights.
2. **Authentic Test Environment:** Undertake full-length mock tests under exam conditions, complete with in-depth feedback.
3. **Customized Study Regime:** We recognize every student is unique. Our approach adapts to your strengths and growth areas.

2025

IELTS COURSES

IELTS Intensive Victory Course

-Weekdays 09:00 - 11:00 / 11:15 - 12:15 / 13:15 - 15:15
12 Weeks / 8 Weeks / 4 Weeks

IELTS Evening Victory Course

-Evenings 17:30 - 19:30
30 Weeks / 20 Weeks / 10 Weeks

IELTS Weekend Victory Course

-Weekends 09:15- 10:45 / 11:00 - 12:30 / 13:30 - 15:30
30 Weeks / 20 Weeks / 10 Weeks

2025 only:

Free IELTS Test with every IELTS Victory Course

IELTS PRIVATE 1:1 Classes

Teacher to student ratio:	10 Hours	20 Hours	40 Hours
1:1	฿13,500	฿26,000	฿50,000
1:2	฿9,500	฿18,000	฿34,000
1:3	฿8,500	฿16,000	฿30,000
1:4	฿7,500	฿14,000	฿26,000

Every course includes: Classes, Level test, certificates, Social activities and access to all school facilities.

Not Included: 3000 THB Registration fee for airport pick up and accommodation support.
ED visas are a further 2000 THB

March

Start 5.0
300 Hrs
฿160,000

Rally

Start 5.5
200 Hrs
฿120,000

Battle

Start 6.0
100 Hrs
฿65,000

6.5

Conquest

IELTS 7.5 Victory Course

Start 6.5

200 Hrs

฿120,000

7.5

When it comes to IELTS preparation, IH Bangkok's IELTS Victory course stands head and shoulders above the rest. Here's why it's considered the best in the world:

🌟 **Expert Instructors:** Our team is comprised of dedicated professionals who have years of experience in the IELTS exam system. They understand the intricacies of the test and impart techniques that have proven to be game-changers.

📚 **Comprehensive Curriculum:** The course covers all four IELTS components (Listening, Reading, Writing, and Speaking) in depth. From comprehensive study material to mock tests, you are thoroughly prepared to face the actual test with confidence.

🌍 **International Recognition:** IH Bangkok is globally acknowledged for its educational standards. The IELTS Victory course leverages this reputation to ensure every student gets world-class training.

✅ **Proven Track Record:** Year after year, our students consistently achieve high IELTS scores. Our alumni network swears by our training methodology, and their success stories are a testament to our quality.

💬 **Individual Attention:** We keep our class sizes limited to ensure that each student gets the personal attention they deserve. Regular one-on-

If you're serious about acing the IELTS and unlocking a world of opportunities, there's no better place than the IELTS Victory course at IH Bangkok. Enroll now and let success do the talking! 🌟🌍

Exams are done in partnership with:



2025 IELTS VICTORY COURSES

March

Start 5

300 Hrs

12 Weeks

฿160,000

Rally

Start 5.5

200 Hrs

8 Weeks

฿120,000

Rally

Start 6.0

100 Hrs

4 Weeks

฿65,000

Every course includes: Classes, Level test, certificates, Social activities and access to all school facilities.

Not Included: 3000 THB Registration fee for airport pick up and accommodation support. ED visas are a further 2000 THB

2025 only:

Free IELTS Test with every IELTS Victory Course

IELTS PRIVATE 1:1 Classes

Teacher to student ratio:	10 Hours	20 Hours	40 Hours
1:1	฿13,500	฿26,000	฿50,000
1:2	฿9,500	฿18,000	฿34,000
1:3	฿8,500	฿16,000	฿30,000
1:4	฿7,500	฿14,000	฿26,000

6.5

IELTS 2025 COURSES START ANY MONDAY

Conquest

Start 6.5

200 Hrs

8 Weeks

฿120,000

7.5

IELTS 7.5 Victory Course

Start dates on request, minimum 2 students

KIDS & TEENS COURSES 2025

AGES 5 - 12



Summer Camps: Cambridge Young Learners

Saturdays Classes: Cambridge Young Learners

Saturdays 09:30 - 12:30

Weekdays Group Class
09:00 - 15:15

1 Week

2 Weeks

2 sibling price
per 1 week

2 sibling price
per 2 weeks

All Levels

฿12,950

฿20,975

฿12,500

฿20,000

All Levels

10 Weeks

฿13,000

20 Weeks

฿26,000

30 Weeks

฿34,000

Talk to our young learner coordinator for more course options or if you want a tailor made course. email: younglearners@ihbangkok.com

1,000 THB supplement per week for specialized diets, vegetarian, allergens



Cambridge English Young Learners

Cambridge Young Learners English Tests (YLE)



YL General English, Primary, Middle School and Lower Secondary School Subjects

Teacher to
student ratio:

10 Hours

20 Hours

40 Hours

1:1

฿13,500

฿26,000

฿50,000

1:2

฿9,500

฿18,000

฿34,000

1:3

฿8,500

฿16,000

฿30,000

1:4

฿7,500

฿14,000

฿26,000

Young Learners Group Tour Courses

- Group Classes:** These guarantees about 15 x 1 hour lessons per week. The other time is spent on activities and field trips
- Accommodation:** Group Summer schools are package courses and includes accommodation at VP Tower
- Activities and Excursions:** All Excursion are included in the package price.
- Airport Transfer and Food:** This course is all inclusive of airport transport, breakfast, Lunch and Dinner

Number of students	1 Week Price	2 Week Price	1 Month Price	Free Group Leader
10	210,000 THB	408,000 THB	750,000 THB	1
15	315,000 THB	610,000 THB	1,120,000 THB	2*
20	405,000 THB	798,000 THB	1,500,000 THB	2
30	600,000 THB	1,180,000 THB	2,200,000 THB	3
Additional Student Price	21,000 THB	40,000 THB	75,000 THB	

Every course includes: Classes, Level test, certificates, Social activities and access to all school facilities.

Not Included: 3000 THB Registration fee for airport pick up and accommodation support. (Excluding Group Tour Courses)

ED visas are a further 2000 THB

02 252 9996
+66 (0) 92 653 3688
INFO@IHBANGKOK.COM



“ I would recommend to my friends, it's a very good course and very, very good teachers. ”

Thomas - France



“ I recommend studying at IH Bangkok. I can study not only English but also various countries' cultures because there are many countries' students. This school has diversity. ”

Hideaki - Japan



“ I would say, if you really want to improve your English and use it naturally, you'd better study at IH Bangkok. ”

Aye - Laos

General English 15 and 25

This course is offered from elementary to upper intermediate. It consists of 15 or 25 hours per week between Monday and Friday from 09:00 - 11:00 and 11:15 to 12:15. General English 25 adds 10 hours per week from 13:15 to 15:15. The first session focuses on integrated skills and the second session on communicative activities. The additional 2 hours for GE25 in the afternoon focuses on furthering students' language ability with smaller classes, more practice, and more personalized feedback, especially providing useful, functional language.

Business English 25

As an extension of the GE15 course, Business English 25 allows students to take part in general English classes in the morning, catering to all their day-to-day and grammatical needs. Students take an additional 10 hours per week from 13:15-15:15 in a classroom where the context is entirely business. BE25 students will spend their afternoons learning how English is used in the work environment, including negotiations, presentations, formal language, business emails, and much more.

Intensive Business English 20 or 25

This course is a combination of the afternoon 13:15-15:15 business class with a further 2 or 3 hours per day of private 1:1. This is for students who want the customized course, focus, and feedback offered in a 1:1 classroom setting. The group classes will cover general business English topics while the private class can concentrate on almost anything related to business: presentations, email writing, customer service, negotiating, business communication, marketing, economics, interview preparation or other topics upon request.

Exam Preparation 10 or 25

IELTS, TOEFL, TOEIC, SAT, ACT, GED, GAT, CAE, CPE, FCE, IGCSE, CU-TEP, or TU-GET: If you are planning to take one of the above exams and need to prepare, while also working on your overall English ability, EX25 provides the perfect solution. EX25 students will join GE15 classes in the morning to raise their overall level and to practice the various skills in classes with students of a range of nationalities. In the afternoon, students will spend two hours of private 1:1 from 13:15 - 15:15 focusing on different aspects and skills required on the exam. EX10 is similar but will only have the private 1:1 classes.

Mixed 25

This course consists of GE15 plus a further 10 (or 15, 20, 25) hours private tuition to focus on any subject that you would like.

Private 10, 15 or 25

These personalised language courses consist of 2 or more hours a day of individual tuition for one or more weeks. The content, times and dates of these classes can be arranged to suit your needs. For example, if you need to prepare for an exam, you want to concentrate on business English skills, or just want extra general English - we can literally teach anything you want!

You can also study in groups of up to 6 as long as you all have a similar level and linguistic needs.



“ It was the best English course. I'm very glad I was in IH, all the teachers are very kind and friendly. ”

Martin - Brazil

Customized Group Courses

We offer flexible courses designed specifically for a group's needs. For example, exam preparation, work-related English, teacher training, preparing for a business trip or presentation etc. We can organise groups of up to 14 students as long as they all have a similar level and linguistic needs. For more information, please contact us at info@ihbangkok.com.



“ It's the greatest place to study English and to make many foreign friends. ”

Tomomori - Japan ”

Other Courses

Teacher Training

As the largest University of Cambridge English CELTA and Delta training centre in Asia, we welcome trainees from any country who want to get the most reputable TEFL (teaching English as a foreign language) certificate available. We also offer the IH Certificate in Teaching Young Learners and Teens and the IH Certificate in Advanced Methodology. We can also offer a range of specialised teacher training courses to closed groups.

Courses for Young Learners and Teenagers

We offer excellent English courses to groups of young learners and teenagers with emphasis on communicative skills and learning through language activities. We also organize a full range of activities and excursions outside of the classroom to give them the opportunity to enjoy everything that Thailand has to offer and to practice their new language skills. For more information about our customized courses, please contact us at info@ihbangkok.com.

IELTS Preparation

Suitable for students at pre-intermediate and above, we offer both private and group classes focusing on academic reading, writing, speaking and listening.

Cambridge KET, PET, FCE, CAE, and CPE Preparation

Suitable for students from beginner level, depending on the exam, we offer both private and group classes focusing on all four skills (reading, writing, speaking and listening) and vocabulary building.

TOEFL or TOEIC Preparation

Suitable for students at pre-intermediate and above, we offer both private and group classes focusing on the specific skills requires to do well on the exam.

IGCSE, GED, and SAT Preparation

Suitable for students at pre-intermediate and above, we offer private classes customized to focus on only the specific areas that you need to work on.



“ You should stay for 3 months because you can not only study English but also learn about Thailand, which is a good place.

Masafumi - Japan ”



“ I'll recommend to all employees in my company.

Kwansoon - Korea ”



“ I'm really glad I chose Bangkok as a study destination. It's very pretty and the people here are extraordinary.

Andre - Switzerland ”





Visas

For those studying from 1 week to 4 weeks, we recommend getting a visa on arrival (visa exemption) available to most countries' citizens. For courses up to 90 days we recommend a 60 day tourist visa (with 30 day extension) as it is quick and easy to obtain from your nearest Thai embassy. For those studying longer, we can organize an Education visa for you, which can be used for 3 to 12 months. Please note that the "ED" Visa can take up to 6 weeks to obtain.

Getting Here

As one of South East Asia's major cities, flying to Bangkok from anywhere in the world is easy and affordable. The main airport, Suvarnabhumi, has a fast and efficient rail link which takes you to the centre of Bangkok. You can also take a cheap taxi from the airport to downtown Bangkok. Alternatively, we can organize an airport transfer for you.



Bangkok's Premier
Teacher Training and
English Language School

IH Bangkok Accommodation Options

1. Serviced Apartments

By far the most popular choice, these are usually studio apartments with your own bathroom, wifi, international and local TV channels and some even have kitchens. Serviced means that your room is regularly cleaned for you and the linen is changed. Most can also provide breakfast for you although, in Bangkok, you are never far from a wide range of delicious local food.

2. Hotels

For those wanting a bit more comfort, there is a vast choice of international standard hotels within easy reach of the school. Places such as Furama Sathorn offer 4-star luxury while places such as Miami Hotel offer a cheaper choice within a few minutes of the school.

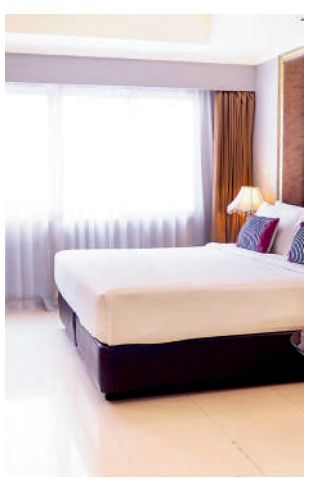
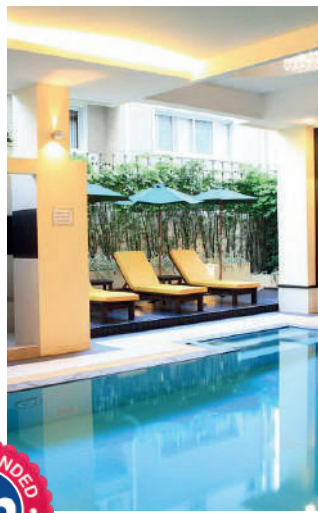
IH Chiang Mai Accommodation Options

We opened our on-site accommodation in 2016. Our Chiang Mai campus now includes the school, accommodation and pool (pictured below), restaurant, coffee and smoothie bar, badminton court and volleyball court.

The whole accommodation complex is designed to be traditionally Thai with an overwhelming sense of calm, all set against a tranquil backdrop of the mountainous beauty that Chiang Mai is known for.



Mona Suite



ROOM SIZE

Option 1	38 sq.m Studio
Option 2	32 sq.m Studio
Option 3	27 sq.m Studio

PACKAGES

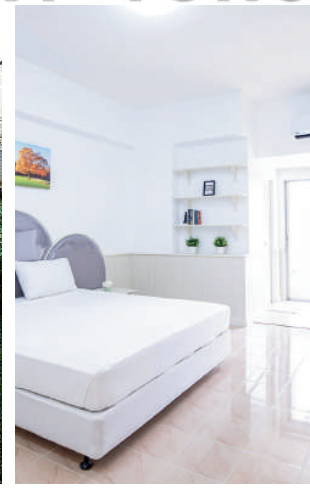
9,100 baht per week	32,000 baht per month
9,100 baht per week	30,000 baht per month
9,100 baht per week	22,000 baht per month

AMENITIES

Fully Serviced Apartment
 Gym, Saltwater Pool,
 Hotplate, Refrigerator,
 Washing Machine,
 Microwave, TV, WIFI,
 Aircon

Contact Us
 (+66) 02 252 9996

VP Tower



ROOM SIZE

Deluxe Room	32 sqm
Standard Suite	64 sqm

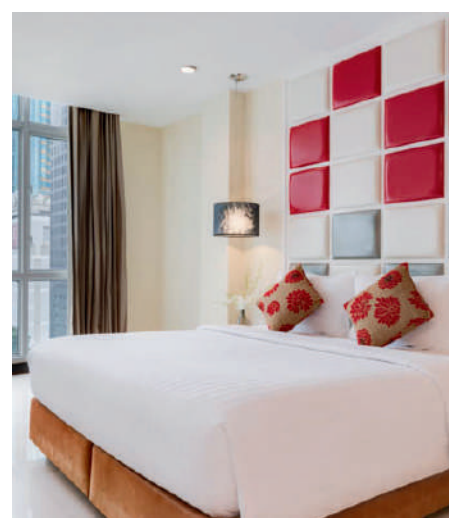
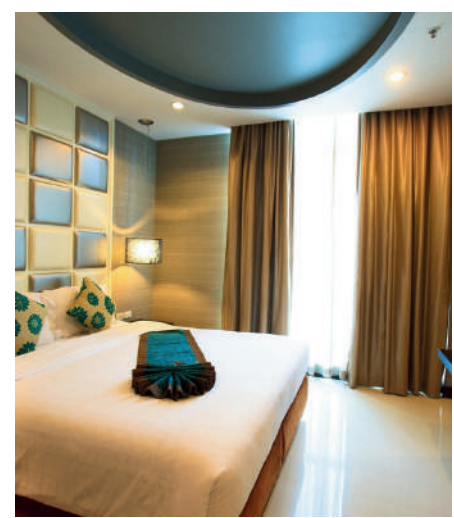
PACKAGES

1,200 baht per day	8,000 baht per week	15,000 baht per month
2,500 baht per day	14,000 baht per week	22,500 baht per month

AMENITIES

Fully Serviced Apartment
 Washing Service (Extra Cost)
 Restaurant, Pool and Garden,
 Aircon, Mini Fridge etc.

FuramaXclusive Asoke



ROOM SIZE

Deluxe Room

32 sqm

PACKAGES

1,800 baht per night
Breakfast included

46,000 baht per month
no breakfast

50,000 baht per month
Breakfast included

AMENITIES

Guests may choose to get in in the hydro pool with jacuzzi, sun tan on the deck chairs, go for a sauna, work out at the gymnasium or have a casual drink at the pool bar.

Contact Us: (+66) 02 252 9996

SOCIAL ACTIVITIES

Indoor Sports

Bowling at Major Ekkamai
D-Sport at Donki Mall

Restaurants

Margarita Storm
Hemingway's
The W District
Taibann Cafe

Museums

Museum Siam
Jim Thompson

Markets

Jodd's Fair
Chatuchak Market

Tourist Attractions

The Grand Palace
Wat Arun
The Golden Mount
The Giant Swing
Ancient City

Weekend Trips

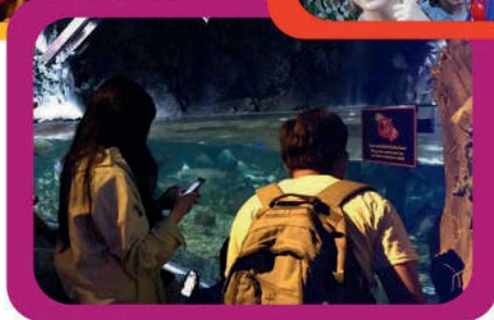
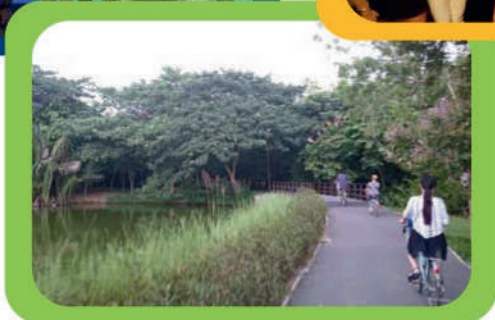
Khao Yai
Kanchanaburi
Hua Hin
Koh Larn



In the evenings and on the weekends, there is never a shortage of things to do both in Bangkok, Chiang Mai and beyond. At IH Bangkok and IH Chiang Mai, we have a wide and interesting programme of activities for you to do. We are also happy to help you to organise anything you want to do so just let our staff know.

Here is a sample of monthly activities for Bangkok:

	1	2	3	4
Mon	Lumpini Park	Siam Ocean World	Erawan Temple	Wine Connection
Tue	Sky Bar	Wat Arun & Wat Pho	Museum of Siam	Suan Pakkad (Cabbage Patch Palace)
Wed	Rot Fai Park & Butterfly Garden	Chinatown	Corrections Museum Bangkok (Hilton Museum)	Jim Thompson House
Thu	Grand Palace	Ice Skating	Cult Movie Night (Jam Cafe)	FlowHouse Bangkok
Fri	Outbox Night Market	Movie Night (Siam Paragon)	Snake Farm	Movie Night (Siam Paragon)
Sat & Sun	Chatuchack Market (world's largest outdoor market) Bike Tour of Bangkok	Ancient City (history and culture of Thailand) or Ayutthaya (ancient capital city of Thailand)	Ko Samet Island or Khao Yai National Park (forests, hiking, elephants)	Kanchanaburi or Hua Hin (seaside resort)



"To learn a language is to have one more window from which to look at the world."
- Chinese Proverb



Happy days are successful days @IH Bangkok



IH Bangkok Language School
The Trendy Office, Floor 9, Sukhumvit Soi 13 Khlong Toei Nuea, Watthana, Bangkok 10110

**International House
Bangkok**

**THE TRENDY OFFICE
SUKHUMVIT SOI 13
KHLONG TOEI NUEA,
WATTHANA, BANGKOK
10110**

+66 (0)92 591 3688

info@ihbangkok.com